

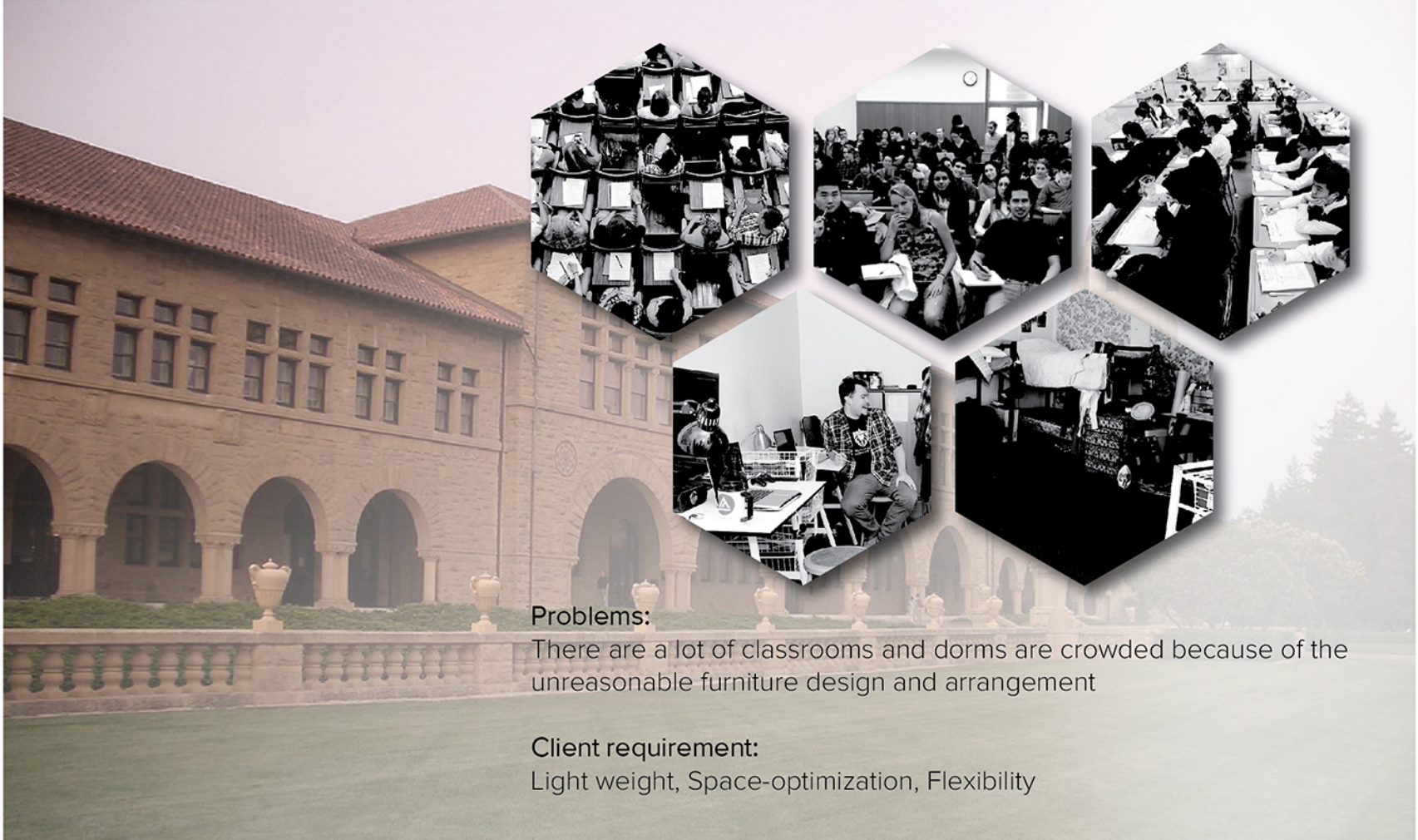


90 °



# Classroom/Dorm of University

90 °



## Problems:

There are a lot of classrooms and dorms are crowded because of the unreasonable furniture design and arrangement

## Client requirement:

Light weight, Space-optimization, Flexibility

# Concept Philosophy

To design a furniture system for the classrooms and dorms of university. It focus on space-optimizatuion, flexibilty and sustainability. In this project, My concept is to use modularity, transformation and functionalism to achieve the concept. Chooes friendly materials to make it sustainable. Design the lightweight furniture to increase the accessibility.

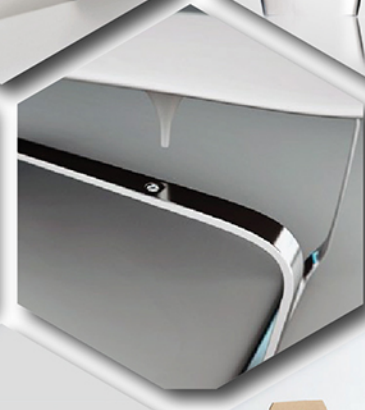
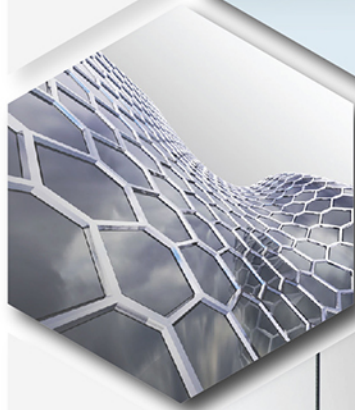
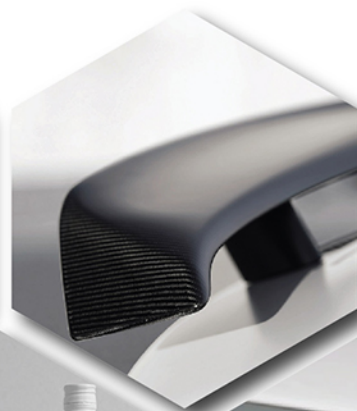
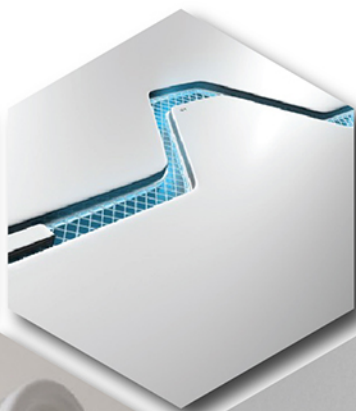
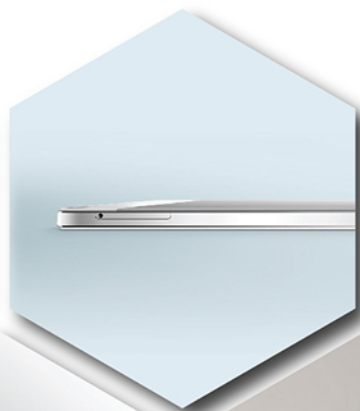




# Design Moodboard

Light

Thin



Simple

Easy

Friendly

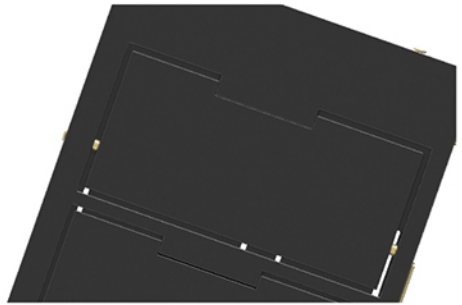
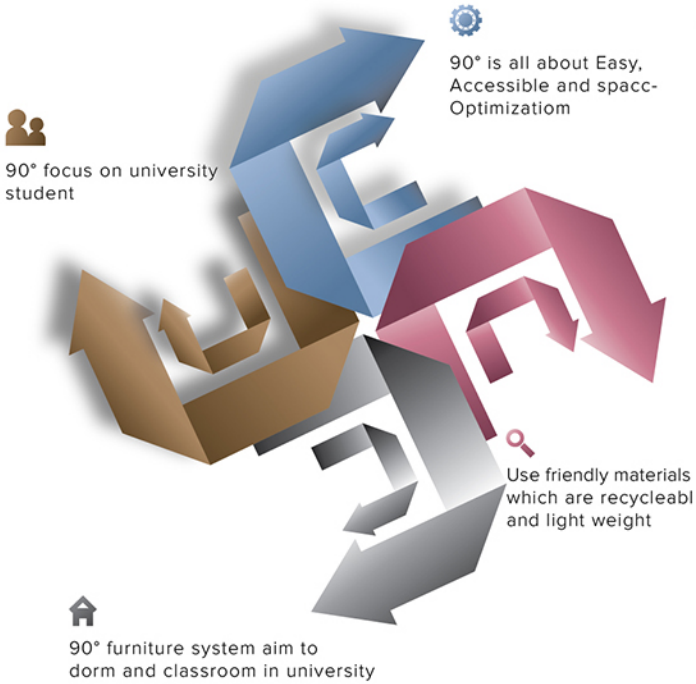
Uniform



Easy

Accessible

Space Optimization



# 90° Furniture System

90 ° is a furniture system which could be transformed by folding 90 degree. It made by plywood, aluminum and plastic. It is simple to assemble and easy to use. It is consist of two pieces.They are connected by hinges.Each of them has been cut for differnt using. This system is able to beapplied to many places in university such as classroom, dorm, library and so on. It is ambient, flexible, functional, sustainable, modular-ized and space-saving.





# W90



## W 9 0

W90 is a piece of furnityre for working working and study purposes.It has a des, chair and shelf. Students are able to use laptop, read books, do homework and so on on W90

# L90

## L 9 0

L90 is a piece of furniture for placing something in the student dorms which are small and crowded. L90 has three-level shelves and two clothes hangers. It offers the basic functions and space-optimization for students







90 °

# C90

## C 9 0

C90 is a piece of furniture for communication when students in the classrooms. It is easy to set up and become turn into two benches. Students are able to take a break or make a team discussion over there.



# Function



# Dorm Combination





# Dorm Combination



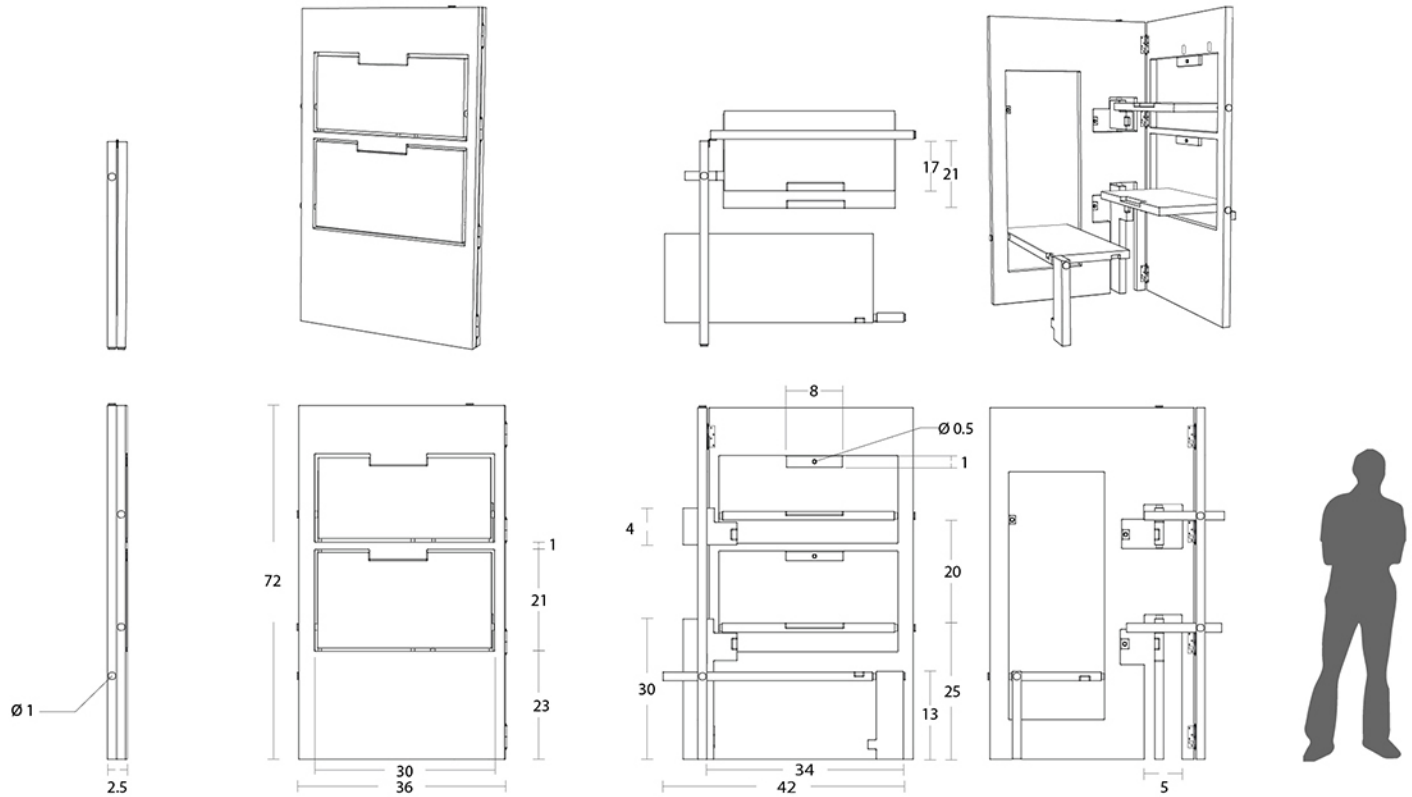
# Classroom Combination





90 °

# Orthographic



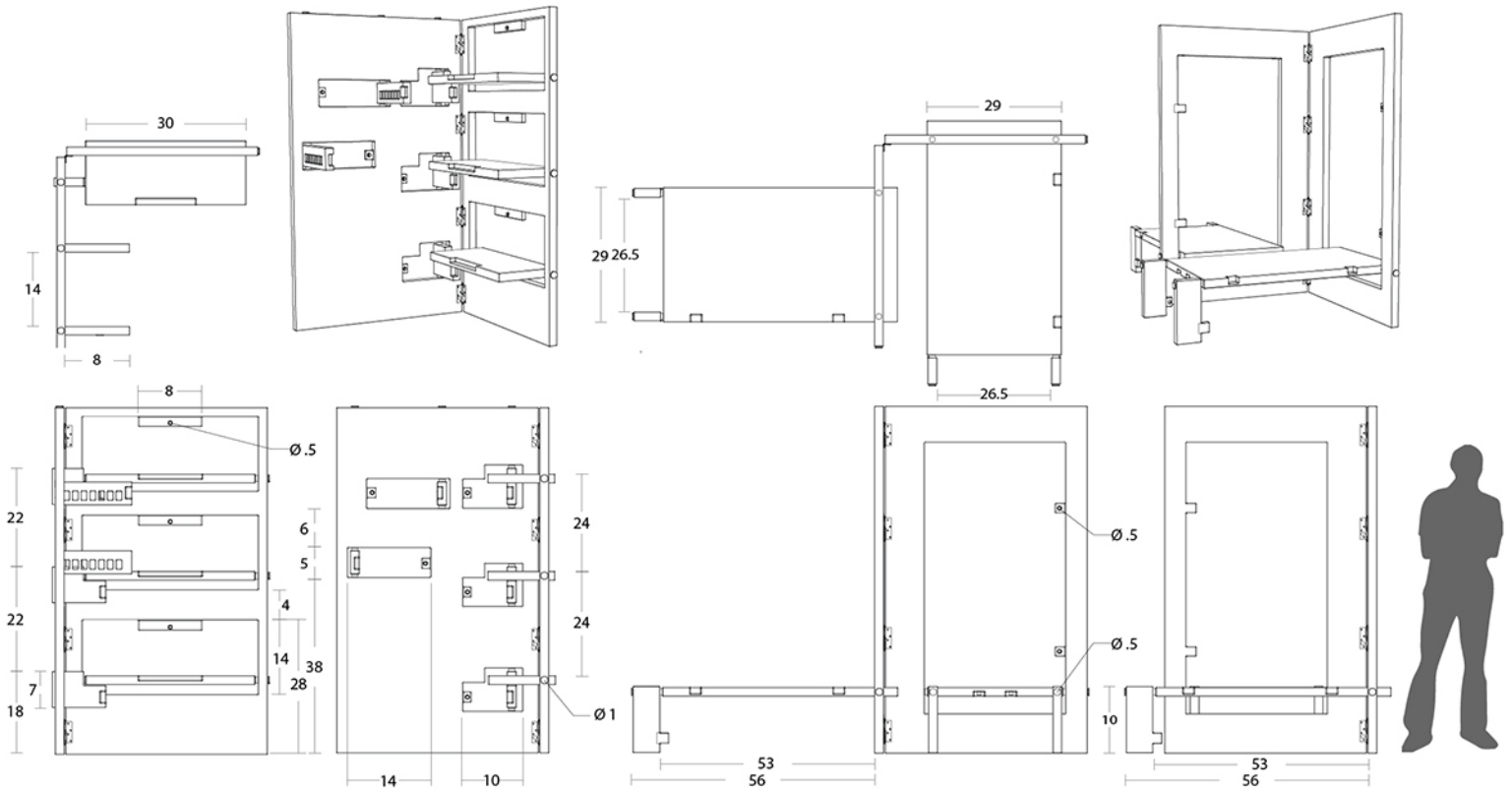
Name: W90			
Units: Metric, Inch	Aluminum		
Scale: 1:1	3/30/16		
Manufacturing Processes: Die cut	Harrison		





90 °

# Orthographic



Name: L90		Name: C90	
Units: Metric, Inch	Plastic	Units: Metric, Inch	Plywood
Scale: 1:1	3/30/16	Scale: 1:1	3/30/16
Manufacturing Processes: Die cut	Harrison	Manufacturing Processes: Die cut	Harrison



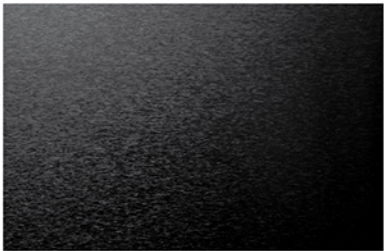
90 °

# CMF

## Color

## Materials

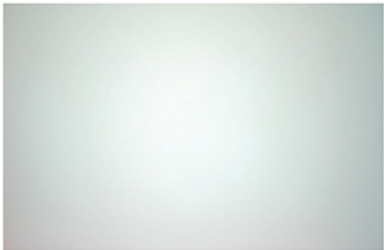
## Finishes



Black

Aluminum

Brushed + Anodized



White

Plastic

Self finishing

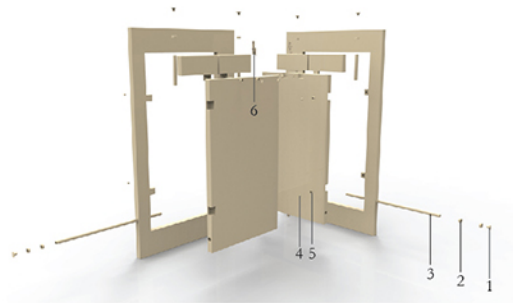


Nature

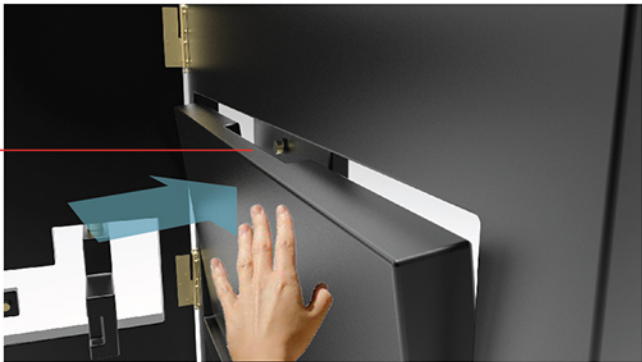
Playwood

Varnishes and Lacquers

# Information



- 1. Aluminum Nuts
- 2. Aluminum ring
- 3. Aluminum rod
- 4. Push latch
- 5. Magnet
- 5. Hinger



## BOM

Name	Size	Quantity	Price
Aluminum board (hollow)	36"x72"x1.25"	2	\$200.00
Plastic board	36"x72"x1.25"	2	\$80.00
Plywood board	36"x72"x1.25"	2	\$150.00
Nuts	Ø 1"	8	\$24.00
Aluminum rings	Ø 1"x1"	8	\$16.00
Aluminum rod (hollow)	Ø 1"x30"	3	\$12.00
Aluminum rod (hollow)	Ø 1"x15"	3	\$6.00
Aluminum rod (hollow)	Ø 1"x10"	3	\$4.00
Push latch	Ø 1.5"x1"	6	\$18.00
Magnet	Ø 1"x1"	6	\$1.20
Hinger	2"x5"	4	\$25.00



